



autokitchen

One software for all interiors

**Summary of
Improvements:
Version 26**

Autokitchen® 26 introduces numerous enhancements, organized into the following categories:

autokitchen

Powered by **MICROCAD
SOFTWARE**



AI RENDERS – REALISM IN SECONDS

The new AI engine transforms shaded views into lifelike color renders in just seconds.



VIRTUAL TOURS – FULLY INTERACTIVE

Light, materials and reflections under your control for unmatched flexibility and realism.



WEB3DPLAN: DRAW ON-SITE, ANYWHERE

Capture the architecture directly in the client's home using any device: phone, tablet or laptop. Export to Autokitchen to complete the design.

autokitchen

Powered by **MICROCAD
SOFTWARE**



AUTOMATIC FURNISHING - WALLS AND ISLANDS

Smart proposals tailored to your preferences. The new furnishing wizards place cabinets and appliances automatically according to your preferences.



AUTOMATED PROJECT DOCUMENTATION

Autokitchen 26 takes project documentation to a new level of efficiency with highly automated dimensioning and paper tab generation.



INSTANT BILL OF MATERIALS
Generates a detailed material list instantly to facilitate the online order submissions.

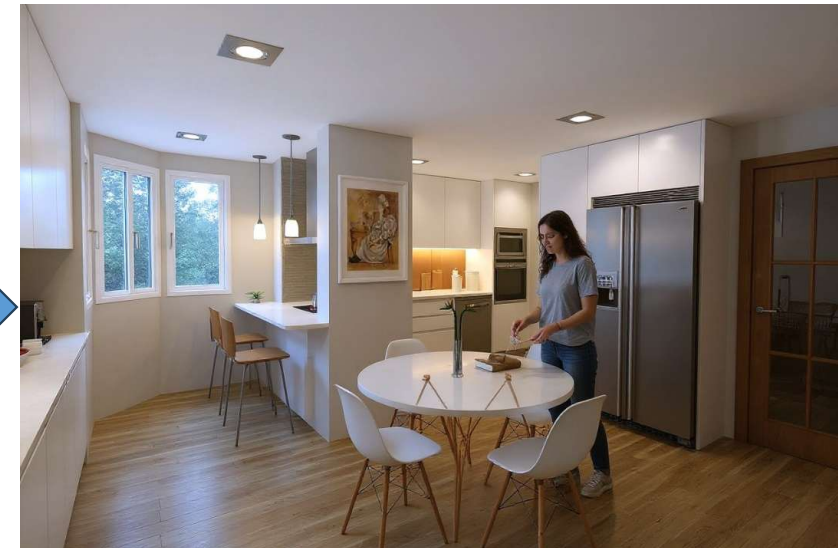
AI Render

AI realism at lightning speed.

Autokitchen 26's new AI instantly enhances your render. Subtle details such as people, lighting effects, plants, and decorative elements can be added.



Options window to generate a new image with Autokitchen's AI.



Autokitchen's AI-generated realistic image.

AI Render

From shading to realism in seconds. Starting from a simple shaded view, the new AI in Autokitchen 26 can generate a photorealistic image in just seconds; so realistic it's hard to tell from the real thing.



Shade mode view

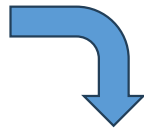


Image generated with Autokitchen 26's AI in less than 20 seconds.

AI Render

Artistic images. Autokitchen's new AI can generate line drawings, watercolors, and pencil drawings in color or monochrome.



Original image

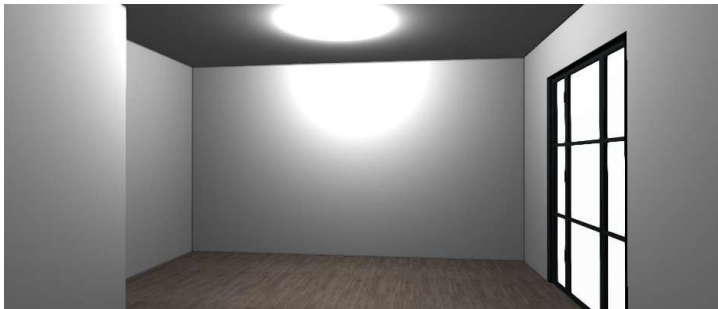


Monochrome pencil drawing



Colored pencil drawing

Image of the kitchen furnished from an empty room. Autokitchen's new AI can generate a complete design proposal directly from the room's architecture—adding cabinetry to empty walls and an island in the center as needed.



Fast shade

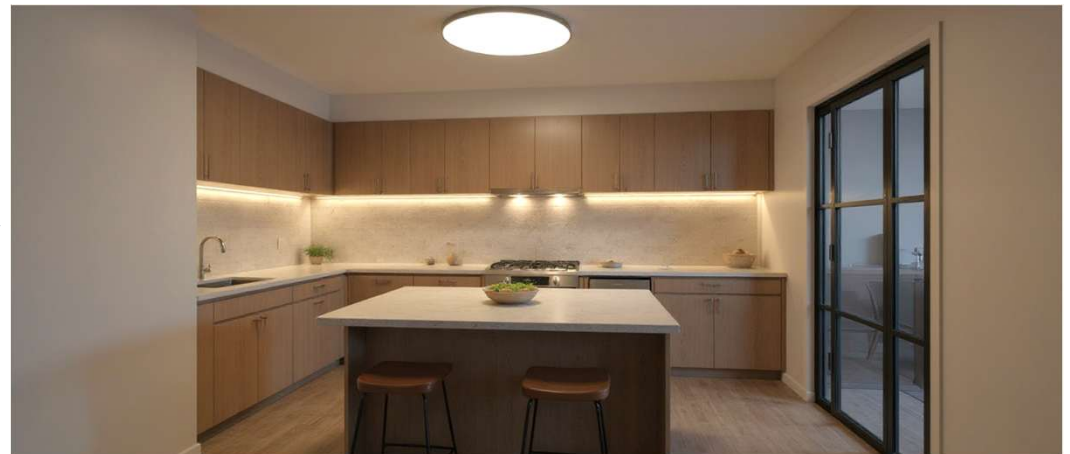


Image of AI-generated furnishing proposal

Virtual Tour

The Virtual Tour now includes controls to adjust the intensity of each light, and toggle shadows on or off.

Overall quality and realism have been improved with better lighting and material reflections.

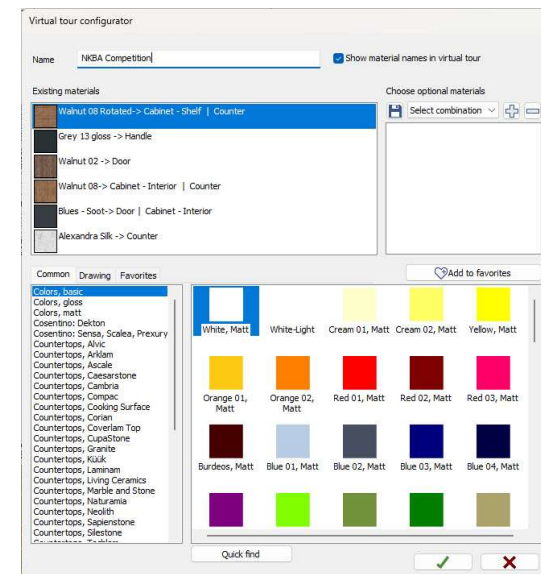
Materials can now be changed not only by clicking directly on doors, countertops, or handles, but also through a new button on the bottom bar that opens a sidebar listing all materials in the design.



New sidebars for changing materials and controlling lights

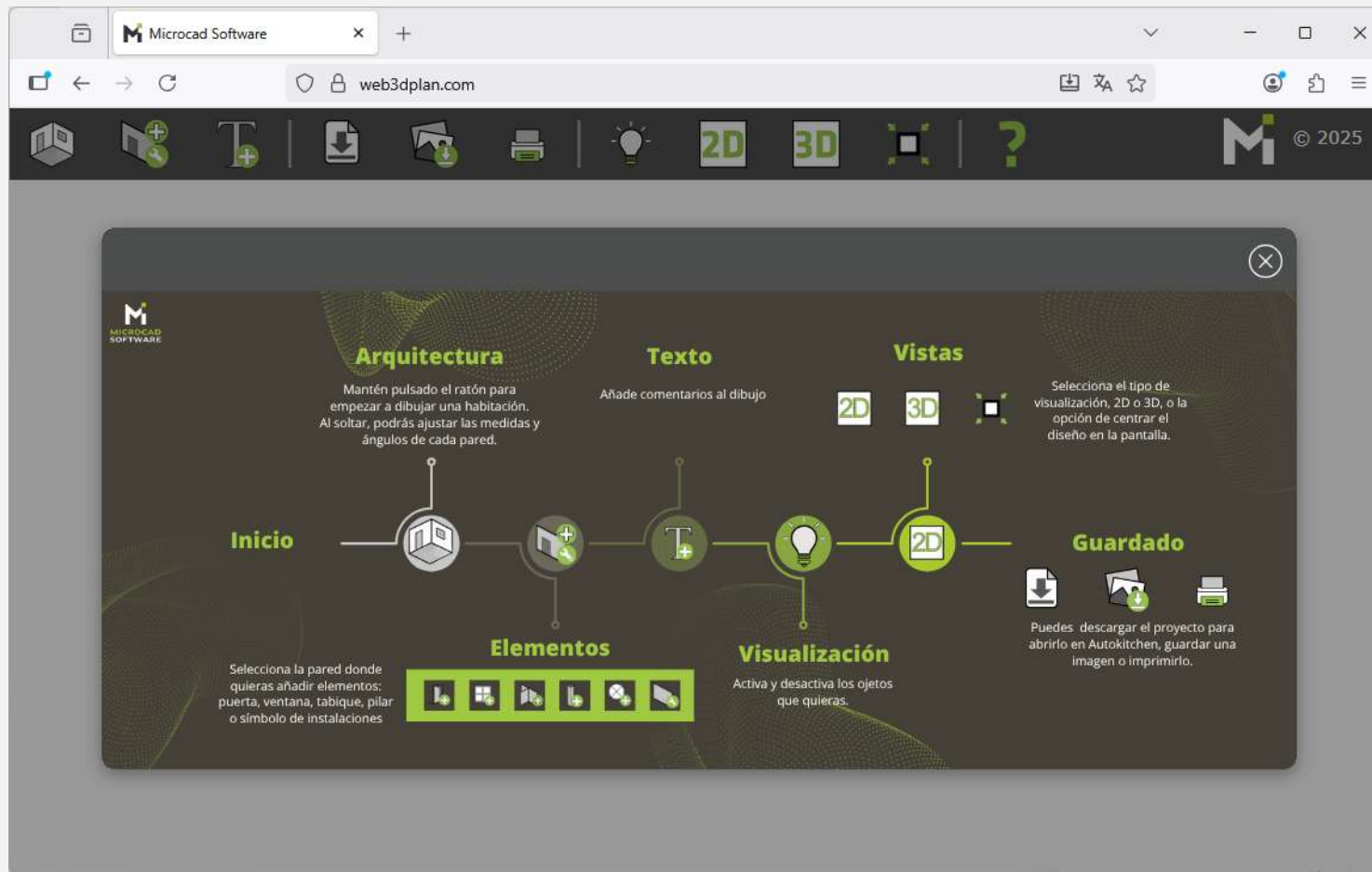
Updated Finish Configuration

The materials configuration dialog in the virtual tour has been redesigned for easier use. You can now choose from saved material collections in a convenient list, with clear text labels added to simplify navigation.



Material Configuration Dialog for the Virtual Tour

New Web3DPlan: Draw architecture from any device.
Create room layouts directly on your smartphone, tablet, or computer—anywhere, anytime.



1

Set the thickness and height of the walls.

2

Drag your finger on the screen to draw the wall and, when you release, enter its length and angle

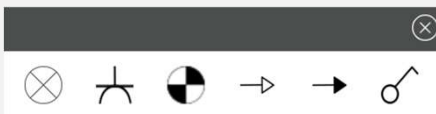
3

Once the room is drawn, add doors, windows, partitions, pillars, installation symbols, or modify the drawn walls.



4

Insert light points, plugs, drains, hot or cold water, outlets and switches.



5

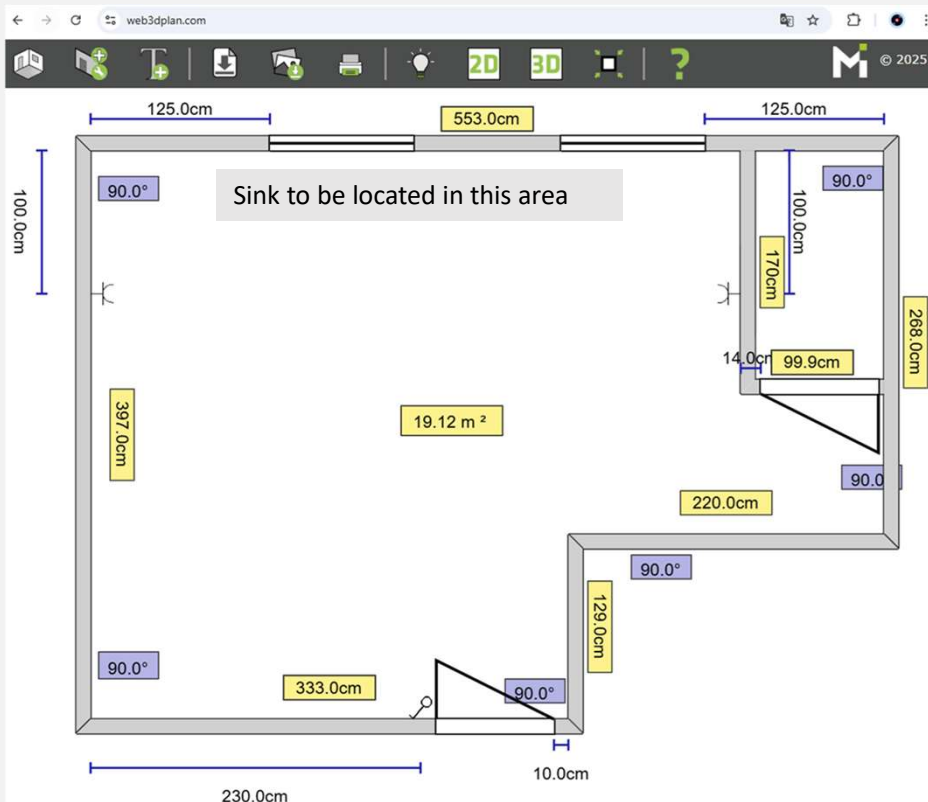
Hide items you don't want to see on the screen

6

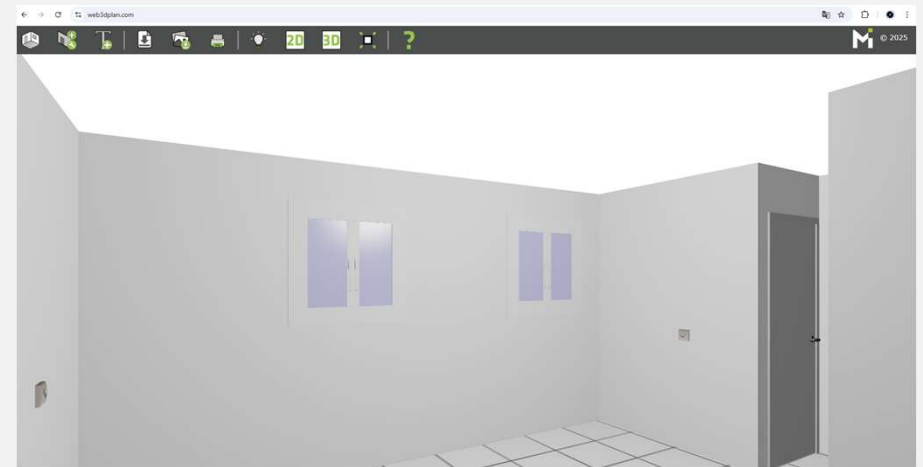
Add comments to the drawing



Visualize your project in 2D and 3D to check that everything is correct



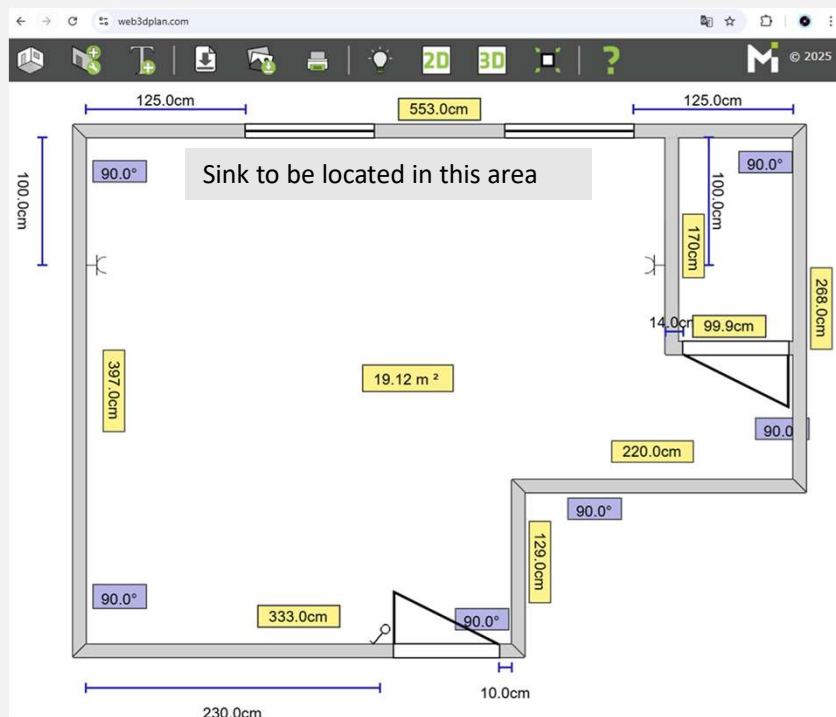
2D view of a room drawn in Web3DPlan



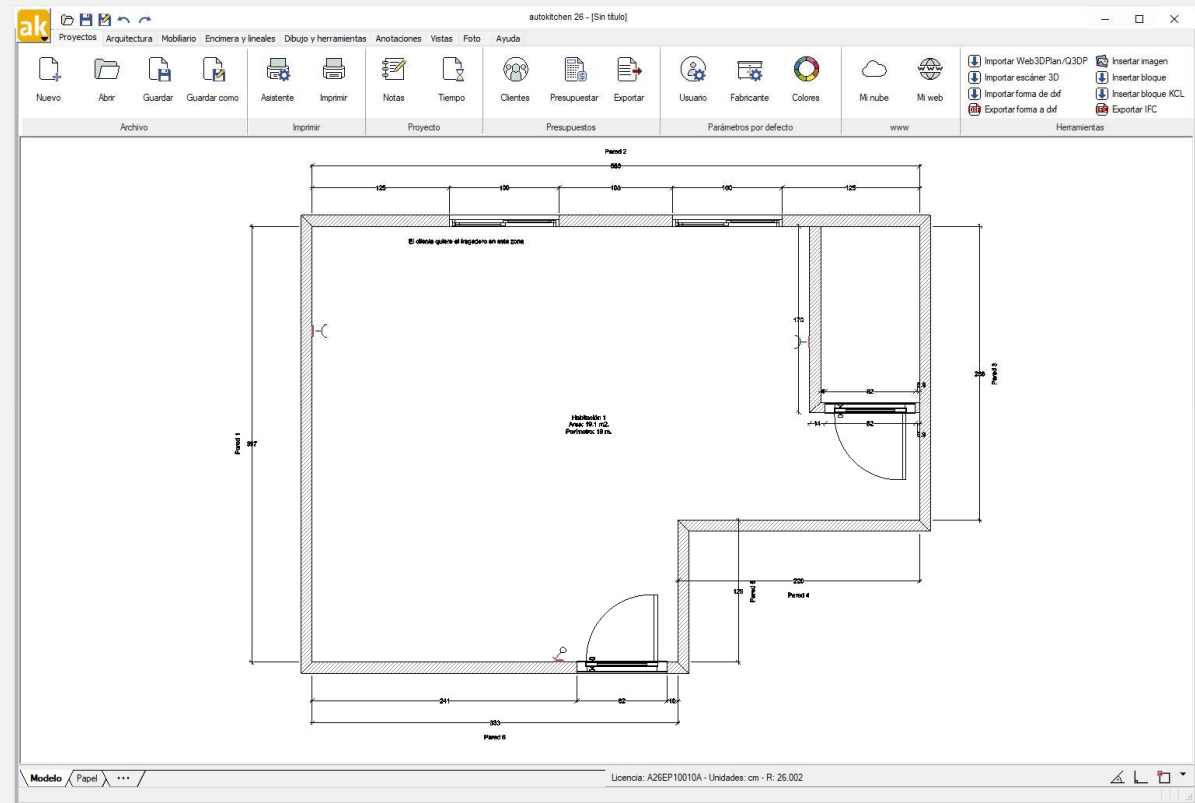
3D view of the room in Web3DPlan



Finally, export the project to Autokitchen, save an image, or print it on paper or PDF



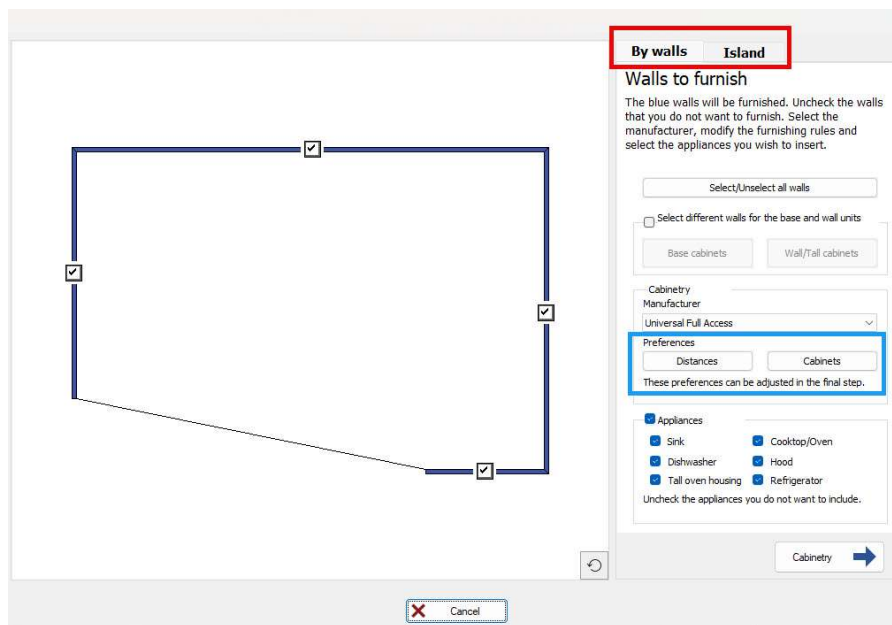
Kitchen Web3DPlan



Kitchen Autokitchen

Automatic furnishing

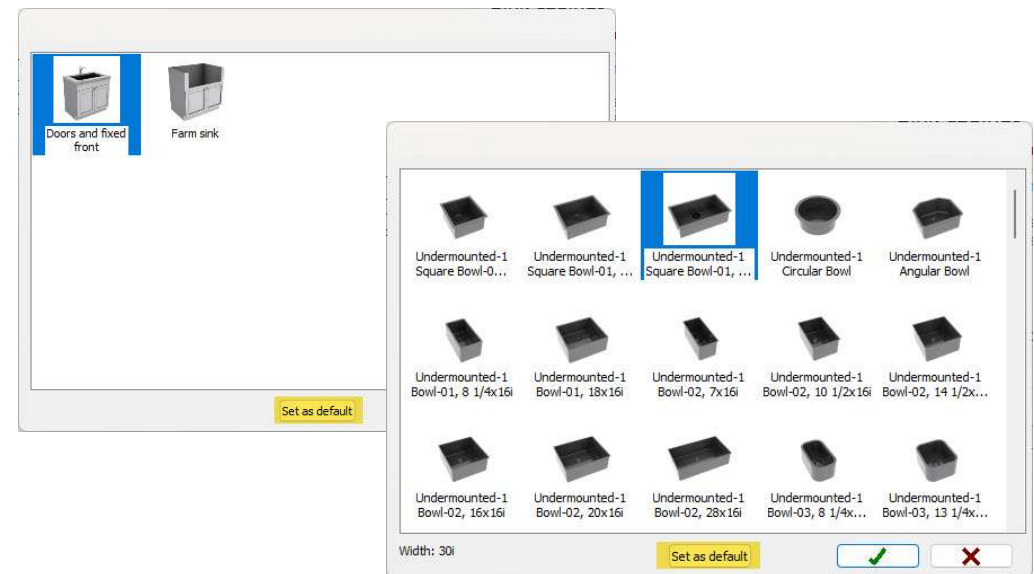
New furnishing options: Walls or Island.
Furnishing preferences have been expanded and organized into two categories: *Distances* and *Cabinets*. These preferences can be adjusted after the automatic furnishing proposal is displayed, allowing you to instantly generate alternative design layouts.



New dialog to configure automatic furnishing options

Smarter Appliance Selection.

You can now choose appliances directly from the universal catalog. Available models are automatically filtered based on the cabinet's dimensions, which are displayed in the lower-left corner of the dialog. New options also let you save default cabinet types for each step—such as corner, sink, or oven cabinets—and remember preferred appliance models for future use.

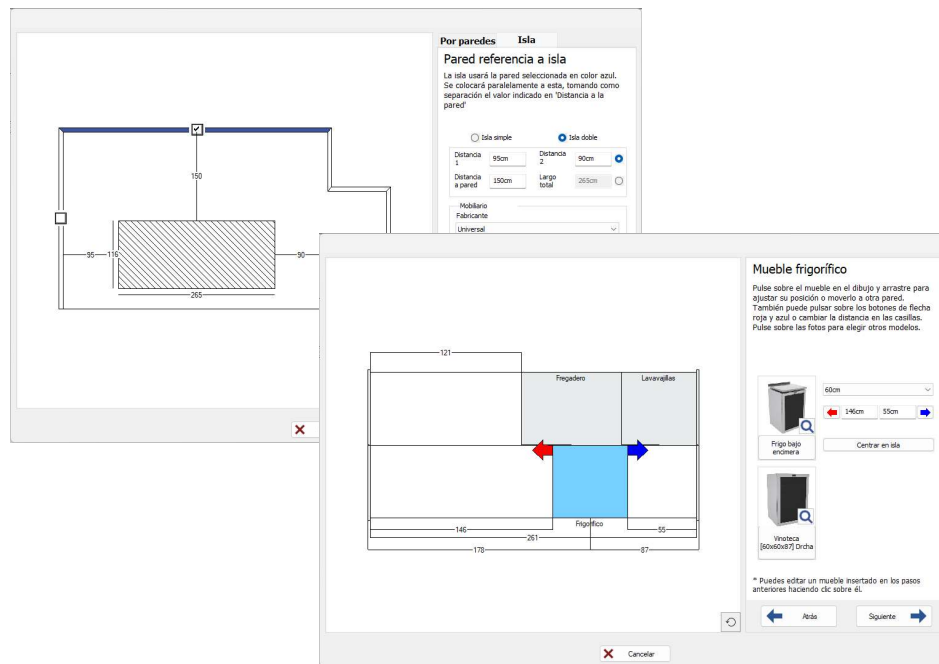


New selection windows for cabinet type and appliance model

Automatic furnishing

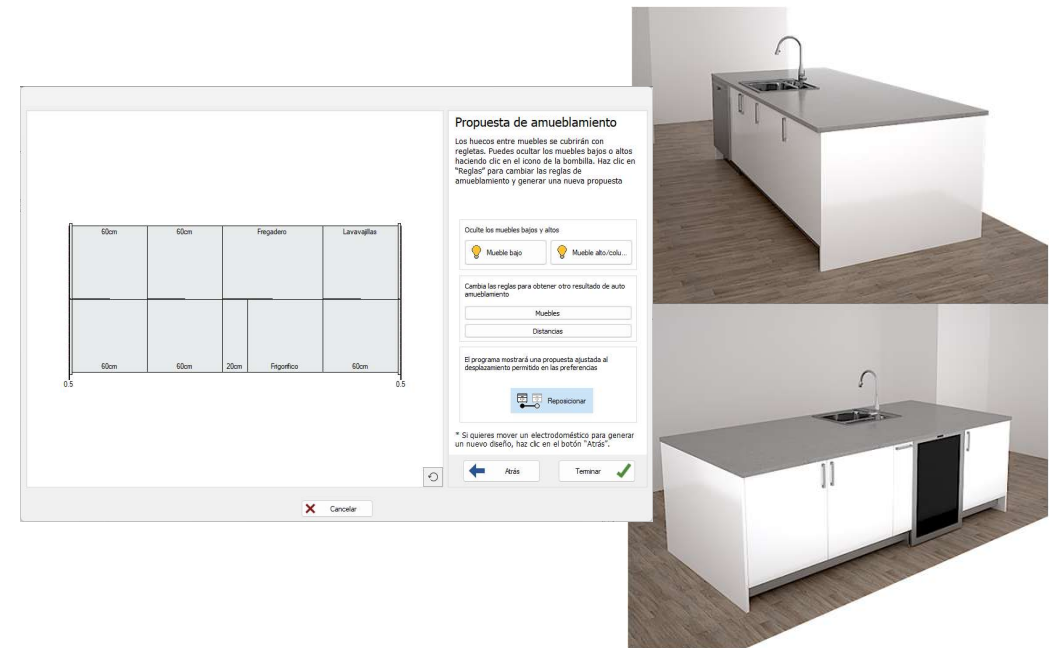
ISLANDS

1. Define the island layout, size, and appliance placement. Choose between single or double front islands and set their width, either fixed or adjusted to the available space. Then specify which appliances to include and where they should be located.



Configuration windows to generate an island automatically

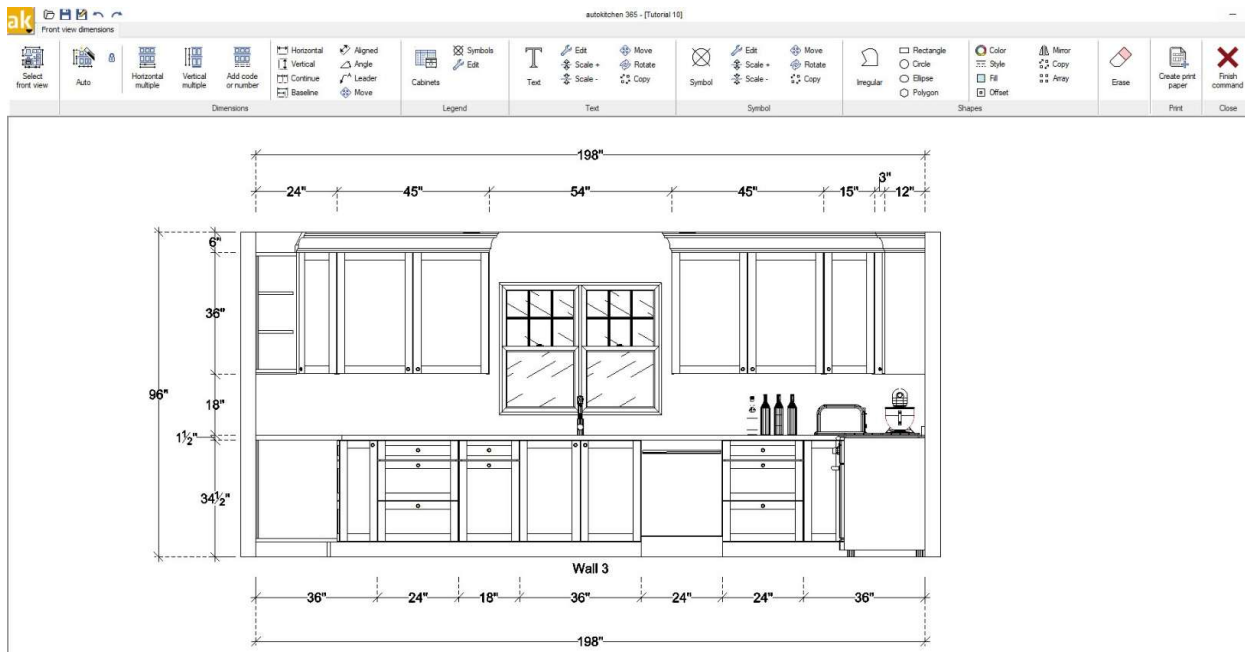
2. Check your island layout. Autokitchen automatically fills any gaps with cabinetry, adjusts the end panels, and modifies the island length based on your preset preferences.



Island Design Proposal and 3D Views

Project Documentation

- Automated elevations.
Elevations are now generated and updated automatically when opened.
New tools have also been added to the elevation toolbar, allowing you to:
- Open another elevation
 - Lock dimensions to prevent automatic updates
 - Add cabinet legends and installation symbols
 - Draw outlines with or without fill



Dimensioned elevation and tool bar

- Project Information
A new report provides detailed data to streamline manufacturer orders, including:
- Door models, finishes, and handle types
 - Door lists with corresponding measurements
 - Cabinet details with dimensions and front information
 - Countertops and shelves

autokitchen

Project summary

autokitchen
Put your company logo here

Models

Id	Name	Finish	Handle
1	Shaker 1-2.25'	Popular - Gray Mountain	Knob classic 006 (R1-11)
2	Shaker 1-2.25'	Popular - Gray Mountain	-
3	Shaker 1	Popular - Gray Mountain	-

Doors

Id	Model	Cabinet	Name	Width	Height	Depth
1	1	1	Door, Shaker 1-2.25'	181	301	0.751
2	1	1	Door, Shaker 1-2.25'	181	301	0.751
3	1	3	Pan drawer, Shaker 1-2.25'	241	121	0.751
4	1	3	Pan drawer, Shaker 1-2.25'	241	121	0.751
5	1	3	Drawer, Shaker 1-2.25'	241	61	0.751
6	2	4	Door, Shaker 1-2.25'	121	301	0.751
7	1	4	Door, Shaker 1-2.25'	11.251	301	0.751
8	1	5	Door, Shaker 1-2.25'	121	301	0.751
9	1	6	Door, Shaker 1-2.25'	151	241	0.751
10	1	6	Door, Shaker 1-2.25'	151	241	0.751
11	1	6	Drawer, Shaker 1-2.25'	151	61	0.751
12	1	6	Drawer, Shaker 1-2.25'	151	61	0.751
13	1	7	Door, Shaker 1-2.25'	181	241	0.751
14	1	7	Drawer, Shaker 1-2.25'	181	61	0.751
15	1	8	Pan drawer, Shaker 1-2.25'	241	121	0.751

Tutorial 10

Page 1 of 3

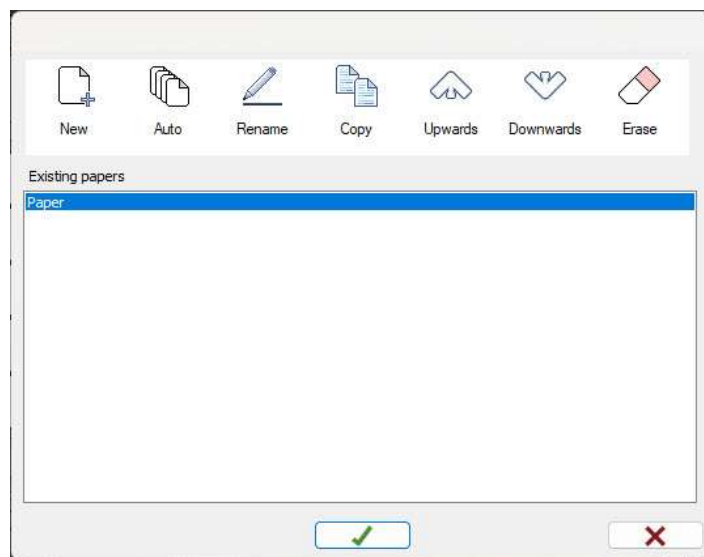
Project Documentation

autokitchen

Powered by MICROCAD
SOFTWARE

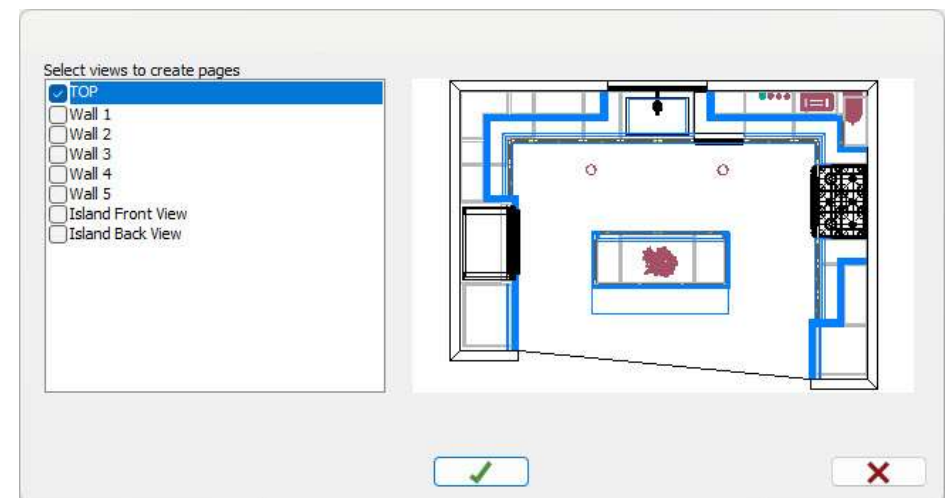
New Print Wizard. The new dialog makes it easy to manage printing.

- Create a new print sheet
- Automatically generate all print sheets in the project
- Rename or copy a sheet
- Reorder sheets
- Delete print sheets



New print wizard window

Automatic creation of paper tabs. When you select the *Auto* option in the new wizard, a dialog appears showing all dimensioned elevations in the project. From there, you can choose which ones to include and automatically generate their print sheets — including the floor plan if desired.



New Auto window

Quote with different price lists

New Budget Option in Autokitchen

Press the *Quote* button to open a dialog listing all cabinets, appliances, accessories, and shelves with prices from the selected series. From this dialog, you can:

- Print using different reports
- Filter elements such as cabinetry, handles, appliances, and shelves
- Show or hide specific columns
- Compare prices across all manufacturer tariffs
- Open the **Estimate** app to adjust the budget without altering the design

Order	Qty.	Reference	Description	Hinge	Width	Depth	Height	Price	Total	M/O	Manufacturer	Series
1	1	B52D36	Sink cabinet 2 doors	N/A	36i	24i	34.5i	0	0	0	Universal FullAccess	Shaker 1-2.25" Egger Verona
4	1	BAD524	Base dishwasher integrated	N/A	24i	24i	34.5i	0	0	0	Universal FullAccess	Shaker 1-2.25" Egger Verona
6	1	BD2PDR24	Base 2 pan drawers, 1 drawer	N/A	24i	24i	34.5i	0	0	0	Universal FullAccess	Shaker 1-2.25" Egger Verona
7	1	BCLD36R	L-Shape corner 1door left swing	N/A	36i	24i	34.5i	0	0	0	Universal FullAccess	Shaker 1-2.25" Egger Verona
9	1	BD12R	Base 1 door	Right	12i	24i	34.5i	0	0	0	Universal FullAccess	Shaker 1-2.25" Egger Verona
10	1	B2D2DR30	Base 2 doors, 2 drawers	N/A	30i	24i	34.5i	0	0	0	Universal FullAccess	Shaker 1-2.25" Egger Verona
11	1	B8NDR18	Pull-out cabinet, 1 drawer	N/A	18i	24i	34.5i	0	0	0	Universal FullAccess	Shaker 1-2.25" Egger Verona
12	1	BD2PDR24	Base 2 pan drawers, 1 drawer	N/A	24i	24i	34.5i	0	0	0	Universal FullAccess	Shaker 1-2.25" Egger Verona
13	1	BCLD36R	L-Shape corner 1door left swing	N/A	36i	24i	34.5i	0	0	0	Universal FullAccess	Shaker 1-2.25" Egger Verona
14	1	BD2PDR18	Base 2 pan drawers, 1 drawer	N/A	18i	24i	34.5i	0	0	0	Universal FullAccess	Shaker 1-2.25" Egger Verona
16	1		L-Shape corner wall cabinet with one door	Right	24i	12i	36i	0	0	0	Universal FullAccess	Shaker 1-2.25" Egger Verona
17	1	W2D3036	Wall cabinet with two doors	N/A	30i	12i	36i	0	0	0	Universal FullAccess	Shaker 1-2.25" Egger Verona
18	1	W2D4536	Wall cabinet with two doors	N/A	45i	12i	36i	0	0	0	Universal FullAccess	Shaker 1-2.25" Egger Verona
18	1	W2D4536	Wall cabinet with two doors	N/A	45i	12i	36i	0	0	0	Universal FullAccess	Shaker 1-2.25" Egger Verona
27	1	WD1536R	Wall cabinet with one door	Right	15i	12i	36i	0	0	0	Universal FullAccess	Shaker 1-2.25" Egger Verona
29	1	WG2D3036	Wall cabinet with two glass doors	N/A	30i	12i	36i	0	0	0	Universal FullAccess	Shaker 1-2.25" Egger Verona
30	1	TLD2490R	Tall cabinet with 2 vertical doors	Right	24i	24i->26i	90i	0	0	*	Universal FullAccess	Shaker 1-2.25" Egger Verona
32	1	TF390	Tall filler	N/A	3i->2.25i	24i->26i	90i	0	0	*	Universal FullAccess	Shaker 1-2.25" Egger Verona
33	1	TFPEP1.590R	Tall refrigerator end panel, right	N/A	1.5i	26i	90i	0	0	0	Universal FullAccess	Shaker 1-2.25" Egger Verona
35	1	TFPEP1.590L	Tall refrigerator end panel, left	N/A	1.5i	26i	90i	0	0	0	Universal FullAccess	Shaker 1-2.25" Egger Verona

Price Comparison Across Pricing Groups

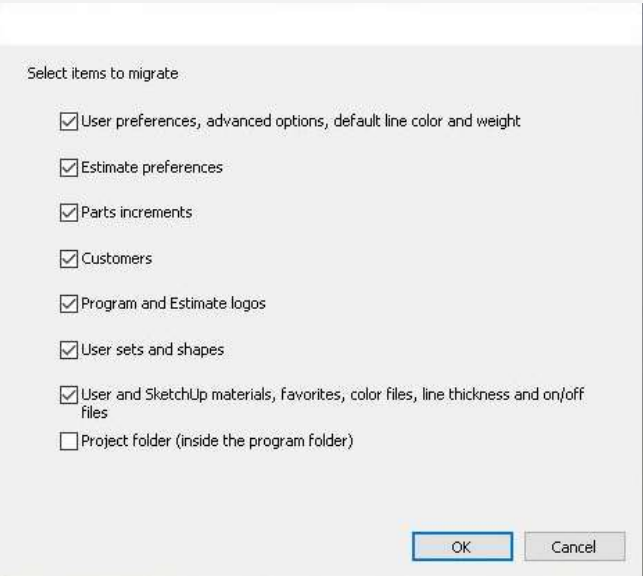
Selecting the *Compare Prices* option opens a window displaying the kitchen's cost in all the manufacturer's groups, along with the price difference for each one relative to the series used in the design.

Fabricante	Serie	Total	Diferencial
Universal	M.Recto 01-070mm.Verde	0	
Universal	M.Recto 01-070mm.Blanco	0	
Universal	Lisa.Blanco	0	=
Universal	Lisa.Crema	0	=
Universal	Lisa.Verde	0	=
Universal	Lisa.Gris	0	=
Universal	Lisa.Azul	0	=
Universal	Lisa.Roble Casella	0	=
Universal	Lisa.Roble Denver	0	=
Universal	Diseño 08.Blanco	0	=
Universal	Diseño 08.Crema	0	=
Universal	Diseño 08.Verde	0	=
Universal	Diseño 08.Gris	0	=
Universal	Diseño 08.Azul	0	=
Universal	Diseño 08.Roble Casella	0	=
Universal	Diseño 08.Roble Denver	0	=
Universal	Inglete 19.Blanco	0	=
Universal	Inglete 19.Crema	0	=
Universal	Inglete 19.Verde	0	=
Universal	Inglete 19.Gris	0	=
Universal	Inglete 19.Azul	0	=
Universal	Inglete 19.Roble Casella	0	=
Universal	Inglete 19.Roble Denver	0	=
Universal	Inglete 20.Blanco	0	=
Universal	Inglete 20.Crema	0	=

Other Improvements

1. Data Transfer from Previous Version.

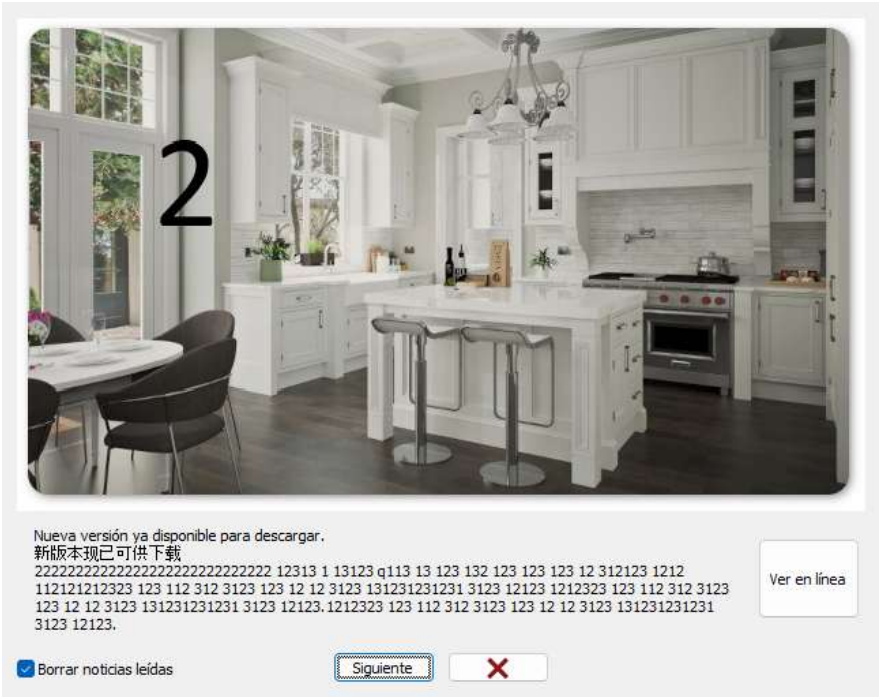
When installing Autokitchen, you'll be prompted to transfer data from the previous version. If accepted, a window appears listing all available items that can be copied, allowing you to choose what to include — such as user preferences, defaults, colors, and line thicknesses.



Data Migration to the New Version

2. News and Updates

When you start the program, Autokitchen can display news items highlighting new features and periodic catalog updates. Each item includes an image, a short description, and a link for more detailed information.

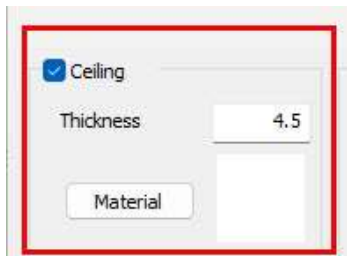


Sample Autokitchen 26 News Item

Other Improvements

3. Architecture:

New ceiling with configurable thickness



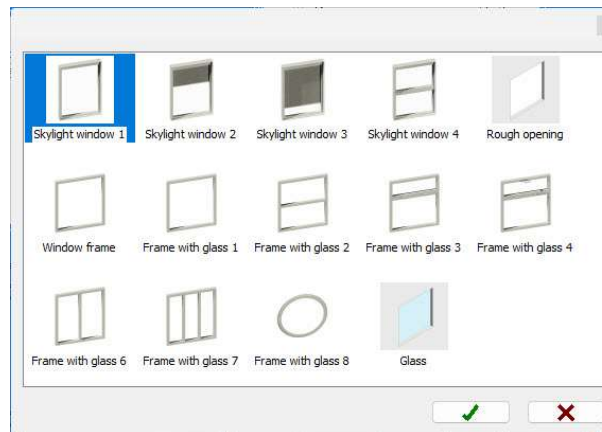
Ceiling thickness configuration



Thick ceiling in Autokitchen 26

Skylights

A new command lets you place skylights. When activated, a library opens showing the available skylight models. Simply select whether the roof is flat or sloped, set the lateral distance from the roof edge, and choose the wall aligned with the base of the window.



Preview of available roof window models



Kitchen image designed with Autokitchen 26 with a skylight in the ceiling

Other Improvements

4. Architecture:

Wall niche

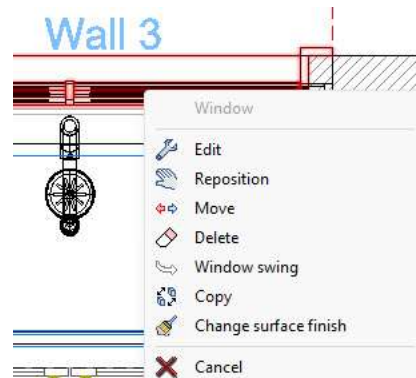
A new option has been added to the *Wall cutout* dialog that lets you define the depth of the opening, making it possible to create wall niches.



Wall niche created with Autokitchen 26

Copy Door/Window

New Copy Door and Copy Window commands are available in the right-click menu.



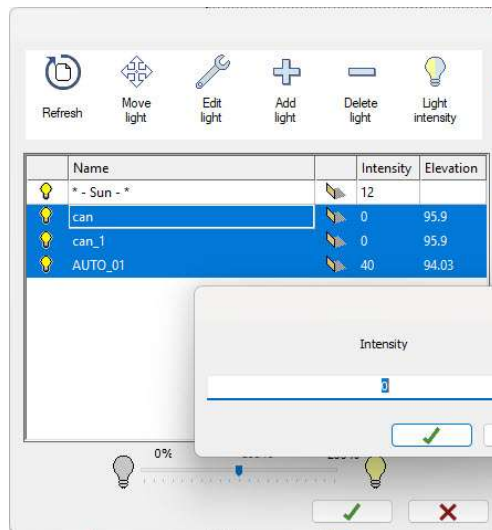
New commands in the right-click menu

Other Architectural Improvements

- Added a new door opening angle option of 0° to display closed doors in 2D floor plans.
- IFC files have been updated to include BIM data.
- Improved geometry control when drawing walls to prevent errors — minimum corner angles are now monitored, and wall intersections are automatically avoided.
- When opening a file that includes a custom wall covering combination not found in the library, it is now added automatically.

Other Improvements

5. Lights: You can now modify several selected lights at once by holding the **Shift** or **Ctrl** key while clicking with the mouse. This makes it possible to:
- Change the intensity of multiple lights to a specific value using the new option in the top bar
 - Adjust the intensity of multiple lights by a percentage using the bottom bar
 - Delete multiple lights at once
 - Move multiple lights simultaneously



Selecting Multiple Lights for Editing

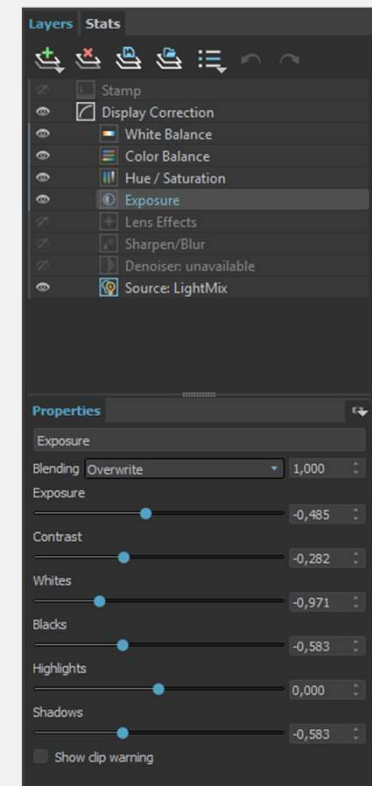
6. Render:
- New Exposure editing options for the generated image:
- White
 - Black
 - Overexposure
 - Shadows
- Option to display the overexposed areas in red and underexposed in blue to facilitate adjustment.



Areas overexposed to light in red and areas underexposed in blue

autokitchen

Powered by MICROCAD SOFTWARE



New options editing the exposure of the generated render

Other Improvements

7. Cabinetry:

A "Comments" field has been added to the cabinet "ruler" dialog. That field populates the observation column of the legend automatically and is exported to Estimate.

In addition, you can modify the cabinet code which will be the one that appears in the floor plans, cabinet legend and the cabinet lists.

Elevation	0i
Depth	24i
Width	36i
Height	34.5i
Number of shelves	0

Floor plan code	
Comments	

Modifications

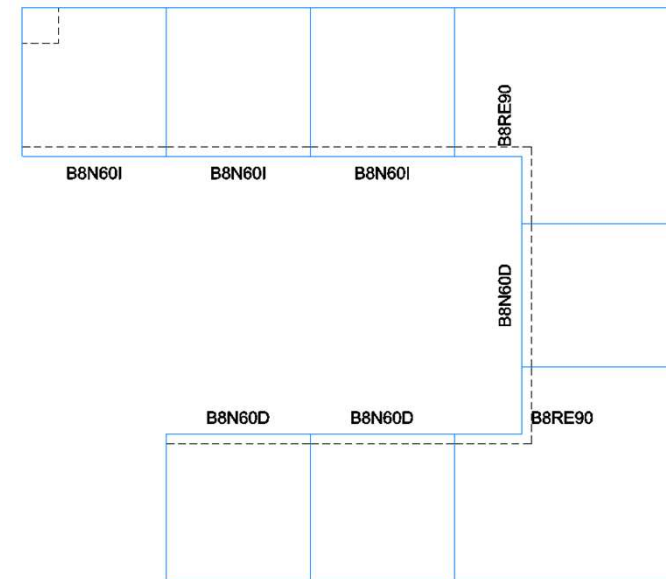
Code	Name
------	------

Options

Qty	Code	Name
-----	------	------

New Cabinet code and Comments fields

- Cabinet cutouts are now displayed in 2D floor plans.
- A new preference lets you orient cabinet codes horizontally (downward) or vertically (to the right).

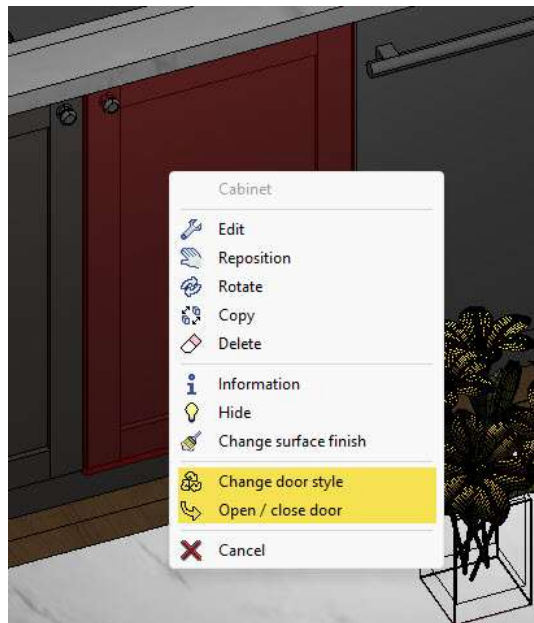


Displaying the cabinet cutout in 2D and orienting the cabinet codes downwards and to the right

Other Improvements

8. Cabinetry/Doors:

New right-click options let you quickly **change the door model** or **open and close a door** after selecting it.



Door Model Change and Open/Close Door option in the right-mouse button menu

Other cabinetry improvements:

- Autokitchen 26 now remembers the last catalog used in each project, allowing you to continue your design without switching catalogs when reopening a file.
- If a previously inserted cabinet contains an appliance whose dimensions have been modified, those changes are now preserved — as in earlier versions.
- When applying a modification to multiple cabinets at once, any manually adjusted dimensions are now maintained (previously, only dimensions changed through a modification were kept). Manual references and notes are also preserved.

Other Improvements

9. Default Series Preference:

New preference to indicate whether you are going to work with independent Door Models or with Series.



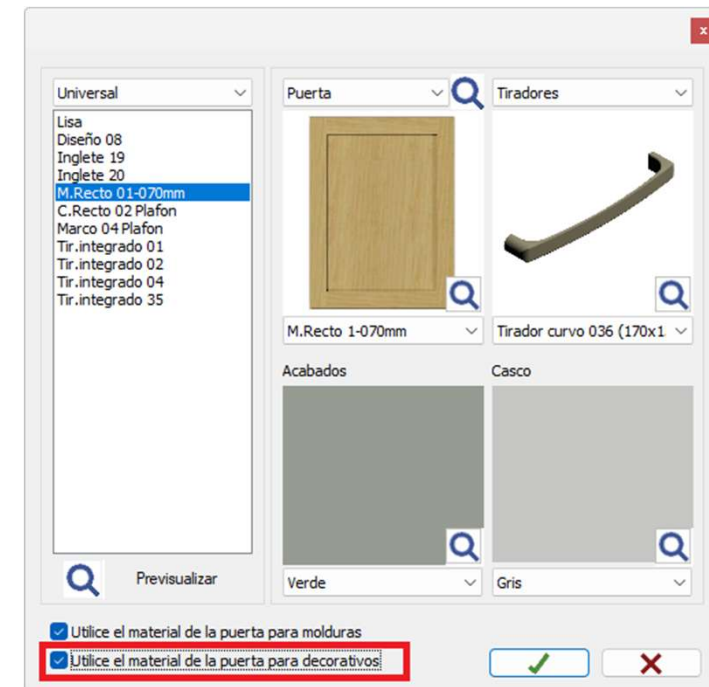
New preference for designing with Series

When this preference is enabled and the default series is selected from the manufacturer's default parameters:

- The default series is automatically applied when inserting cabinets.
- Clicking the door icon in the *Cabinet Insertion* dialog now displays the available series by default.
- When the *Series* dialog is opened, the default series is preselected.
- The default series is also used in automatic furnishing.
- It determines the displayed kitchen price.

Additionally, the default series in the *Universal* catalog have been updated.

New option so that, when applying series, the material of the doors is automatically applied to decorative furniture.

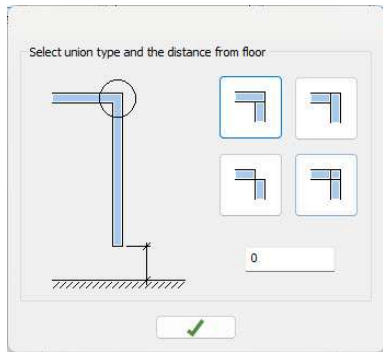


New option to use the material from the door to the hull of decorative furniture

Other Improvements

10. Waterfall countertops

A new dialog has been added to the waterfall countertop modification. This includes an option to ensure material continuity between the horizontal and vertical sections.



New way of creating a waterfall countertop

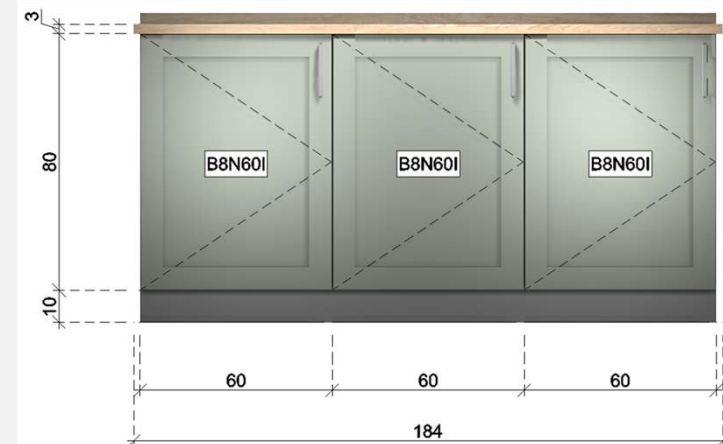
autokitchen

Powered by MICROCAD
SOFTWARE

11. Dimensioned elevations:

In addition to the new automated dimensioning, outlines, and legends described earlier, the following enhancements have been made:

- The elevation preview size has been increased for better visibility.
- A new dimensioning preference allows the use of dashed dimension lines (as shown in the example). This option is also available for plan dimensions.
- A new preference lets you choose how door openings are displayed in elevations — either as shown in the figure or in reverse.
- A light background has been added behind framed cabinet codes to improve legibility in shaded elevations.



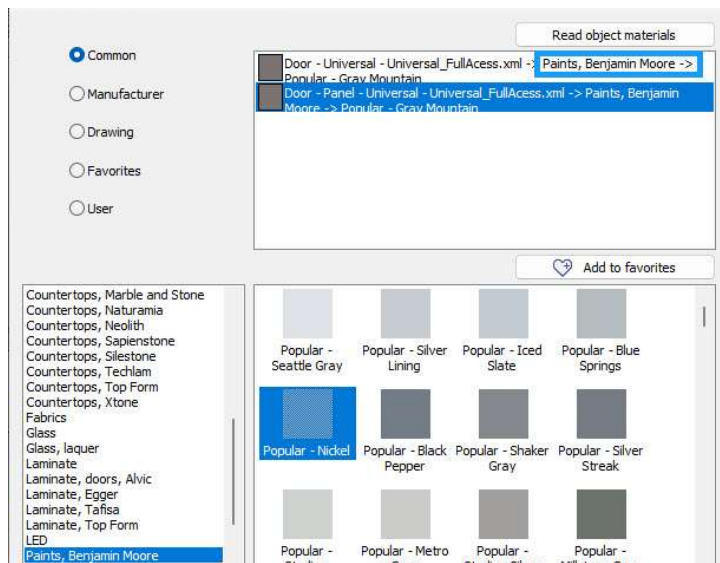
Dimensioned elevation with dashed lines, framed cabinet codes with filling, and configurable 2D opening representation

Other Improvements

12. Materials:

Object Materials

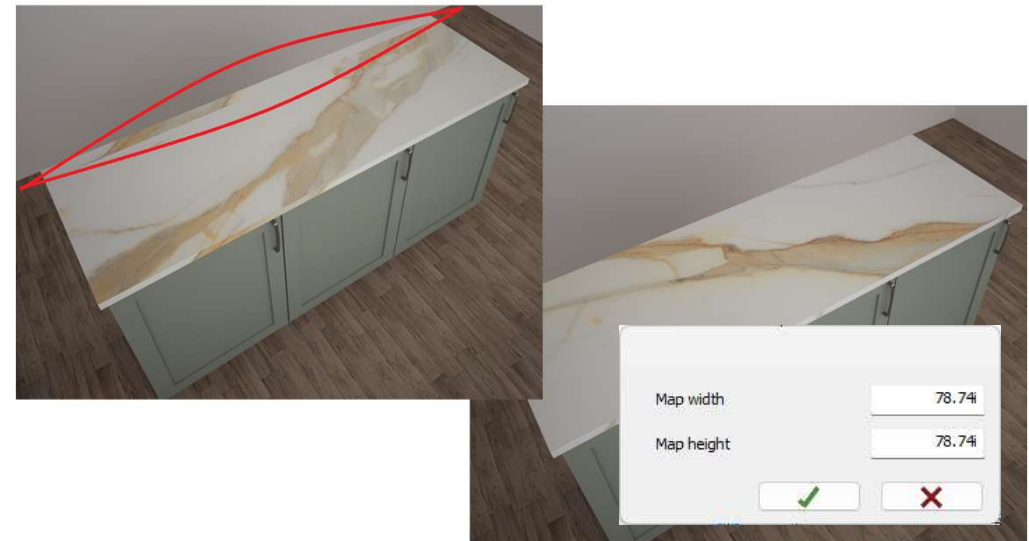
- The manufacturer's name now appears before the name of the applied material.
- A new option lets you copy the material from another object of the same type.



Name of the manufacturer of the applied material and new option to read the material of another object

Countertop Material Mapping

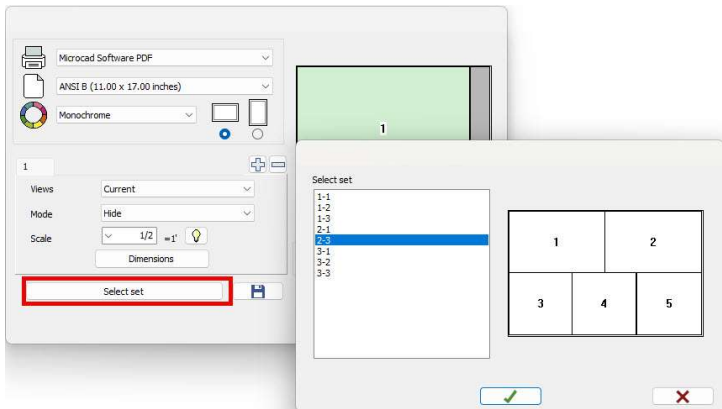
Autokitchen 26 now displays the panel size for each countertop material and manufacturer. Mapping is used to reposition the material when a visible cut appears on the countertop or when you want to adjust its orientation or placement.



Mapping a countertop to change the origin to the lower left corner and the orientation of the material

Other Improvements

13. Printing Enhancements:
- In addition to the new *Print Wizard* and automatic sheet creation features described earlier, the following improvements have been made:
- The buttons in the *Paper Settings* dialog have been reorganized for easier use.
 - A new preference allows you to create dimensioned elevations with hidden lines even when using wireframe mode. For all other display modes, the paper is generated using the active display mode.
 - The preview size of the boxes has been increased for better visibility.
 - A preview of available window combinations has been added to *Advanced Printing*.



Preview window combinations in advanced printing

14. Legends:
- When you click the *Create Legend* button, if a legend already exists, you'll be asked whether you want to update it.
- If you choose **Yes**, all project changes are added to the existing legend.
 - If you choose **No**, you can create a new legend instead.

This feature applies to both cabinetry legends and symbol legends.

CABINET LEGEND					
Code	Description	Hinge	Width	Depth	Height
BS2D36	Sink cabinet 2 doors	N/A	36	24	34.5
BADS24	Base dishwasher integrated	N/A	24	24	34.5
BD2PDR24	Base 2 pan drawers, 1 drawer	N/A	24	24	34.5
BCLD36R	L-Shape corner 1door left swing	N/A	36	36	34.5
BD12R	Base 1 door	Right	12	24	34.5
B2D2DR30	Base 2 doors, 2 drawers	N/A	30	24	34.5
		N/A	18	24	34.5
		N/A	24	24	34.5
		N/A	36	36	34.5
		N/A	18	24	34.5
		Right	24	24	36
		N/A	30	12	36
		N/A	45	12	36
		N/A	45	12	36
WD1636R	Wall cabinet with one door	Right	16	12	36
WG2D3036	Wall cabinet with two glass doors	N/A	30	12	36

Automatic Legend Update

Other Improvements

15. Turn On/Off:

- The buttons on the toolbar have been rearranged for easier use.
- Hiding cabinets no longer hides countertops or shelves — these can now be hidden separately using their own button.
- The *Hide Cabinets* and *Hide Accessories* options now correctly distinguish between the two object types (previously they affected both indiscriminately).
- A new button has been added to hide cabinet doors and view the interior.



Rearrangement of the On/Off buttons and new option for closet doors

autokitchen

Powered by MICROCAD SOFTWARE

16. Custom Shelves Layer:

A dedicated layer has been created for custom shelves. This allows you to:

- Hide them independently (previously, they were hidden when the cabinet doors were hidden).
- Assign specific line weight and color settings.

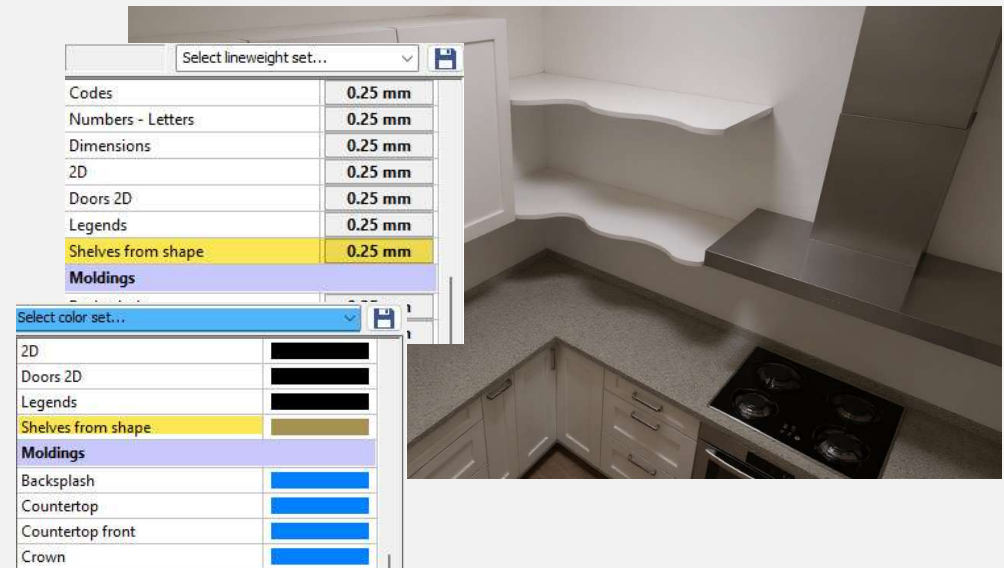
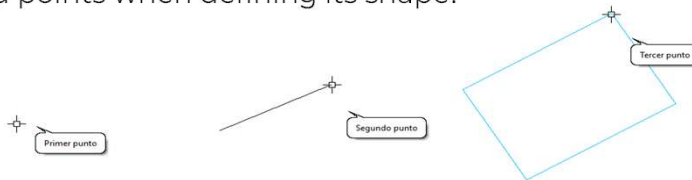


Image of a custom shelf and the windows for setting the color and line weight

Other Improvements

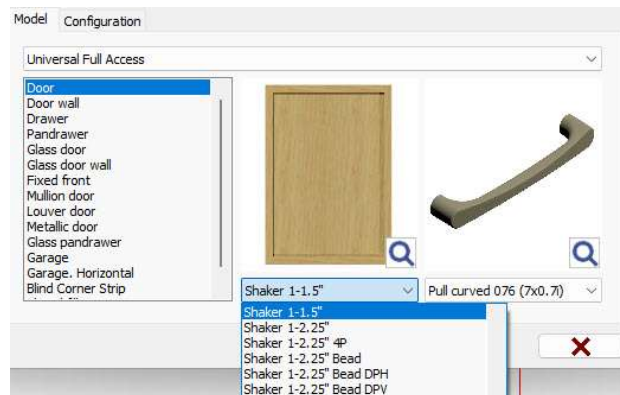
17. Other improvements:

- Drawing and Tools: New rectangle drawing method that allows the use of magnetized points when defining its shape.

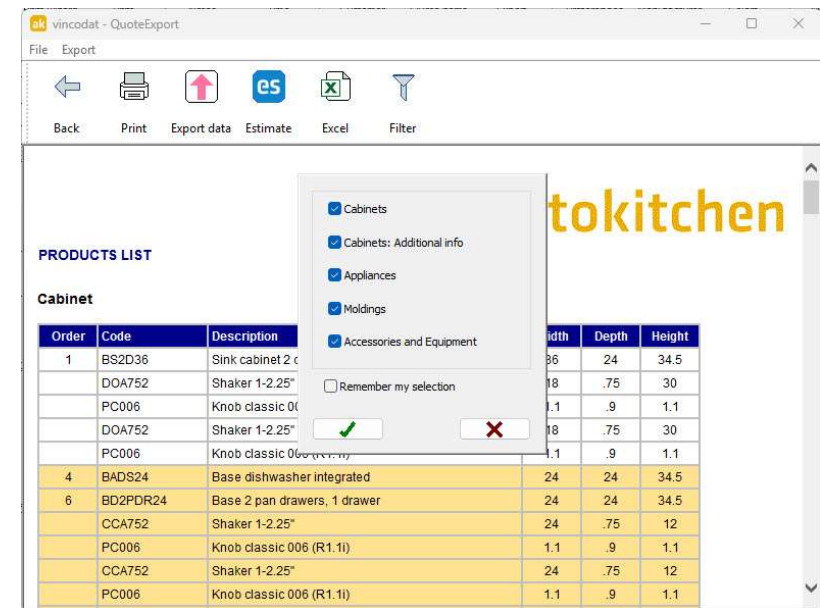


- The outline of the cabinet and the shelves is now hidden in the "Design" display mode (in previous versions a rectangle was shown at the base).

- All drop-down menus for door models, handles and finishes have been revised to show the full description.



- Improvements in export and link with manufacturers' ERP systems.
- Filters dialog: Added option to remember the last filter settings applied. When you open the Quote-Export, the list is displayed based on the saved display filter.



Product list display filters and option to save the last used filter



autokitchen

**Send us your
improvement
suggestions—we'll
consider them for
Autokitchen 27**